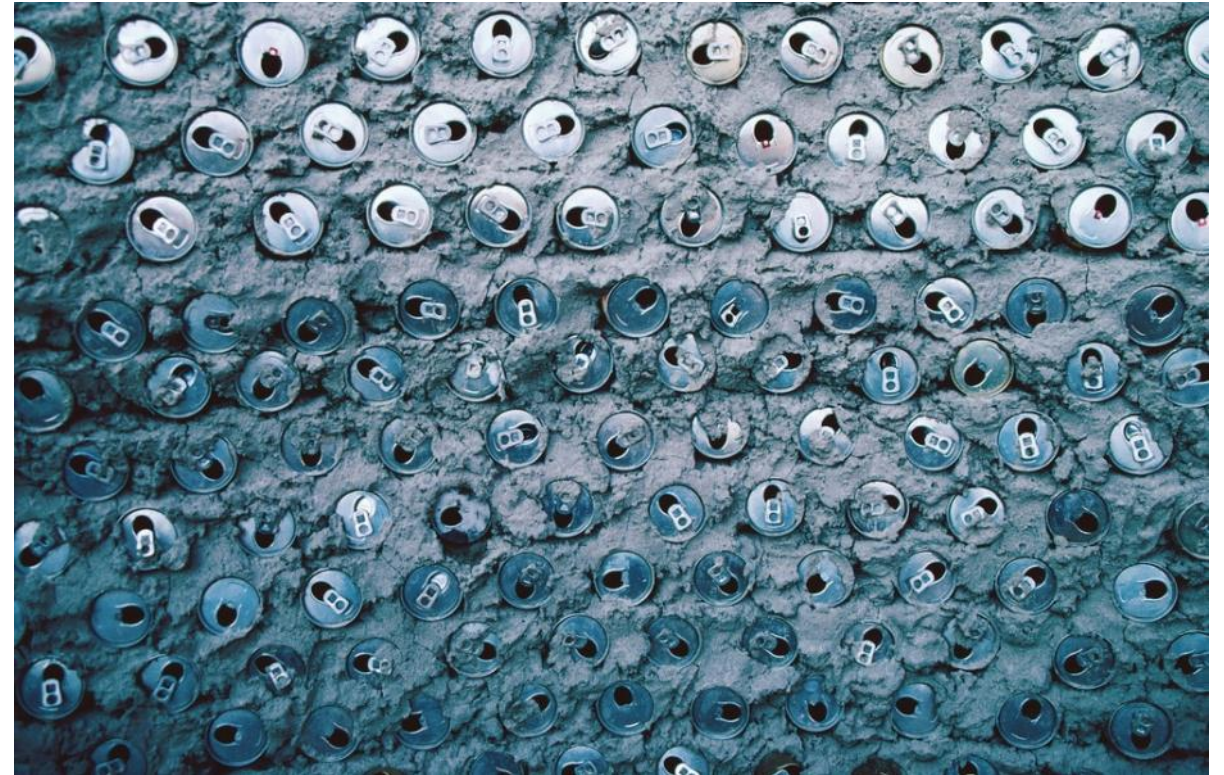




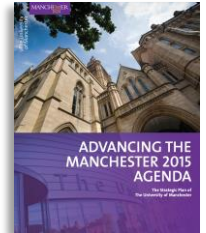
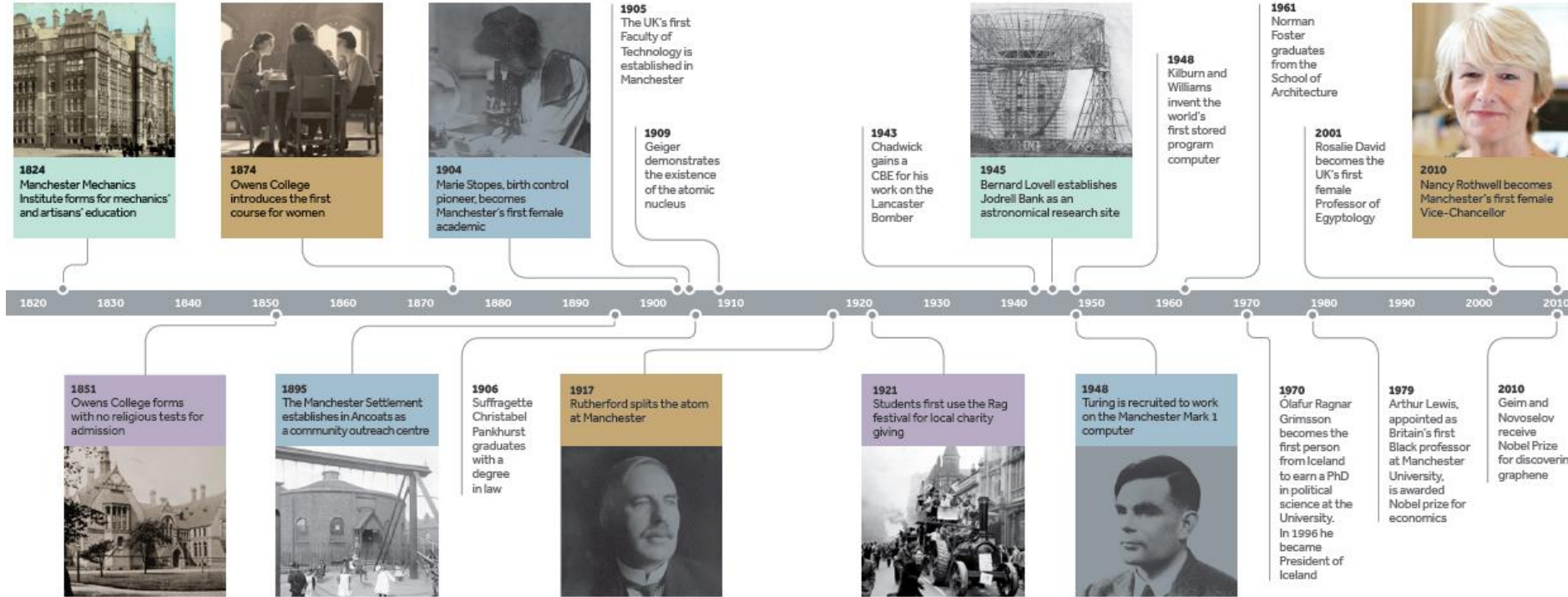
# Embedding social responsibility: a case study from Manchester

Professor Nalin Thakkar, Vice-President for Social Responsibility

1. Past
2. Purpose
3. People
4. Programmes
5. Performance



# Past: social responsibility since 1824



# 1

Goal one

*World-class  
research*

# 2

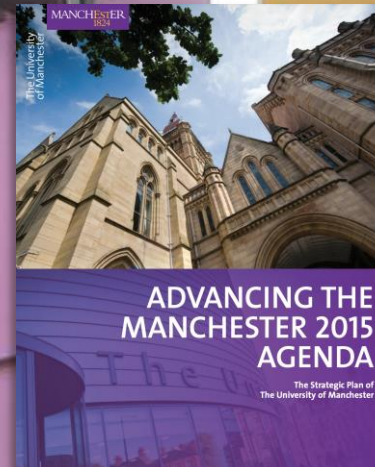
Goal two

*Outstanding learning  
and student experience*

# 3

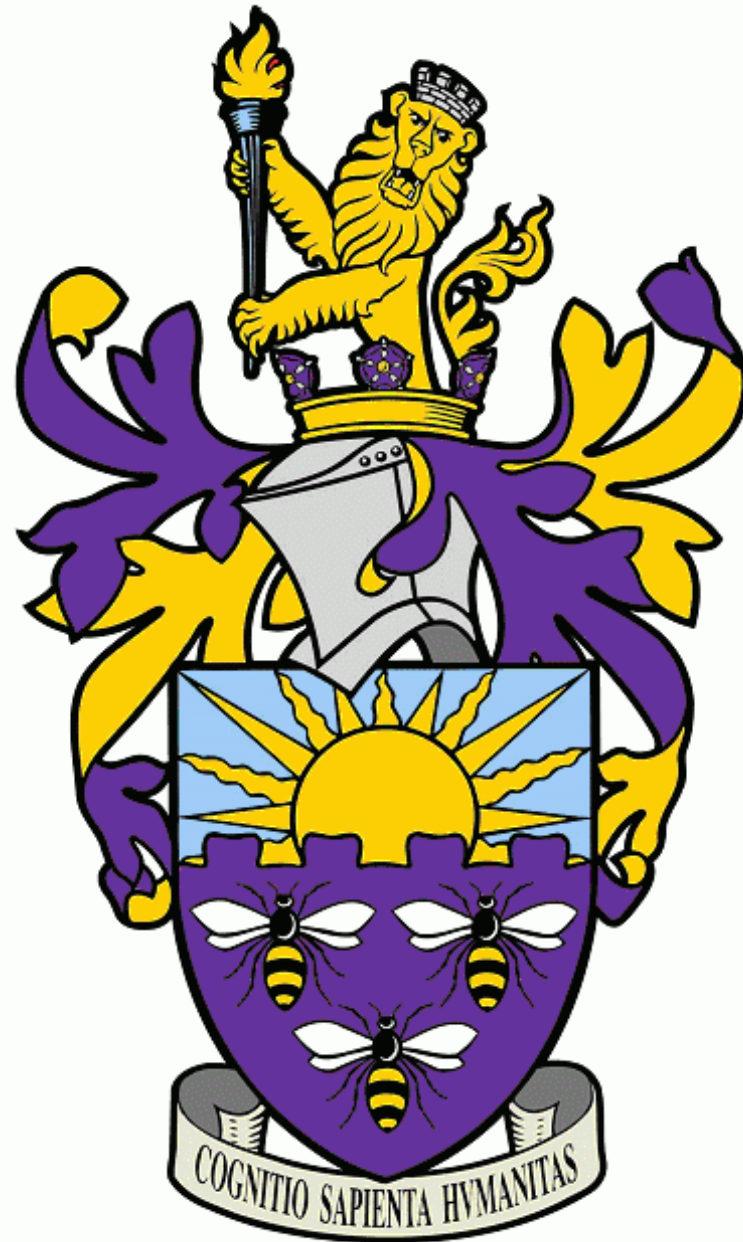
Goal three

*Social  
responsibility*



MANCHESTER  
1824

The University of Manchester



# Social responsibility is both . . . .

- a set of values and a unifying theme
- a distinct orientation of practical and measurable activities in our university



21 June 2010

## New President and Vice-Chancellor for The University of Manchester

Professor Dame Nancy Rothwell has been appointed President and Vice-Chancellor of The University of Manchester.



Dame Nancy was selected following an international search which produced an impressive shortlist of candidates.

A distinguished Life Scientist, Dame Nancy has been a member of staff at the University since 1987 and Deputy President and Deputy Vice-Chancellor since 2007.

She will take-up her post on 1<sup>st</sup> July 2010 succeeding Professor Alan Gilbert, who is retiring after six years. Professor Gilbert was the inaugural President and Vice-Chancellor of The University of Manchester, which was established following the merger of the Victoria University of Manchester and UMIST.

Dame Nancy becomes the first woman to lead The University of Manchester or either of its two predecessor institutions.

The screenshot shows the website for The Royal Institution. The header includes the logo and the tagline "Science Lives Here". Navigation links include "What's on", "Education", "Families", "Christmas Lectures", "Our history", "About", and "Join and support". There are also buttons for "Blog" and "Video". The main content area features a video player for a lecture titled "Staying alive: the body in balance" by Dame Nancy Rothwell. Below the video player, there is a section titled "About this series" with a description of the lecture series and social media sharing options.

The screenshot shows the BBC Radio 4 website. The header includes the BBC logo and navigation links for "Sign in", "News", "Sport", "Weather", "iPlayer", "Sounds", and "More". There is a search bar and a "LIVE Start the Week" button. The main content area features a large image of Professor Dame Nancy Rothwell with a "Listen now" button. Below the image, there is a section titled "Professor Dame Nancy Rothwell" with a description of the program and a "45 minutes" duration. To the right, there is a "Last on" section for "Fri 9 Jan 2015 09:00 BBC RADIO 4" and a "More episodes" section with "PREVIOUS Ray Winstone" and "NEXT Jo Malone".

# Leadership

MANCHESTER 1824 The University of Manchester StaffNet Search

Working here News Departments Resources Community A-Z Governance

StaffNet / News / Senior Leadership Team Appointments

Senior Leadership Team Appointments  
27 Jun 2019

Professor April McMahon to be Vice President for Teaching, Learning and Students and Professor Nalin Thakkar to be Vice-President for Social Responsibility




The University is pleased to announce that after a competitive and international recruitment process from an exceptional field of candidates, we have appointed two highly talented and experienced leaders to join our Senior Leadership Team:


MANCHESTER 1824 The University of Manchester StaffNet Search

Working here News Departments Resources Community A-Z

StaffNet / News / News archive / March 2013 / University appoints full-time Director of Social Responsibility

University appoints full-time Director of Social Responsibility  
01 Mar 2013

Julian Skyrme has been appointed as the University's first full-time Director of Social Responsibility.



Prior to this, Julian led on widening participation and undergraduate recruitment activity for a number of years, where he helped take Manchester to the top end of the Russell Group for our intake of students from under-represented backgrounds.

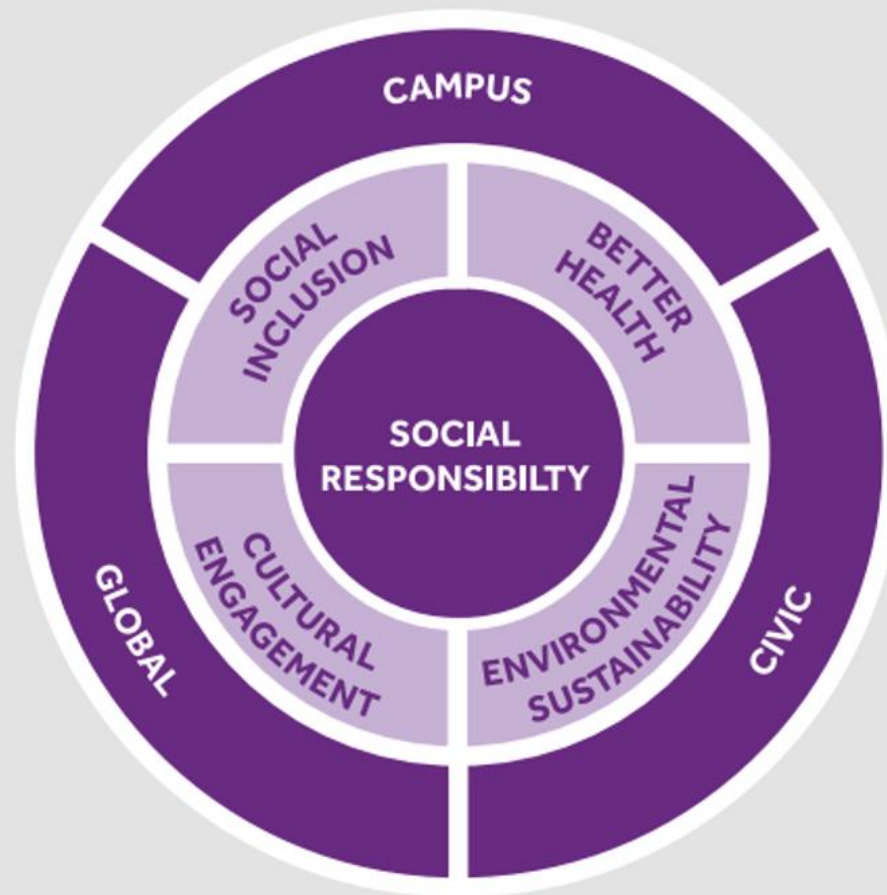
Social Responsibility is one of the three core goals in our Manchester 2020 Strategic Plan. Julian will be responsible for leading and coordinating the University's strategy across five new priority areas:

- research impact
- socially-responsible graduates
- public and community engagement
- fair employment practices
- environmental sustainability

The role of Director was created following a review of Social Responsibility undertaken at the end of 2012.



# Social responsibility plan



We are committed to becoming a zero carbon university by 2038

We are divesting from fossil fuel and other carbon-intensive investments

We are an accredited Living Wage Employer

**SOCIAL INCLUSION**

As a global centre of research and teaching, and one of our city-region's largest employers, we're challenging the inequalities and prejudices that affect people's lives locally, nationally and globally.



**WIDENING PARTICIPATION**

We invest more than £1.5 million annually in financial support for students from disadvantaged backgrounds.



**SCHOOL GOVERNOR INITIATIVE**

We've helped more than 1,000 staff and alumni to contribute to education leadership.



**EMPLOYMENT SUPPORT**

We've supported more than 4,000 local people into work using The Works, our unique employment partnership.



**EQUITY AND MERIT PROGRAMME**

With support from our donors, we've helped more than 300 postgraduate students to lead on sustainable development in their own countries.

**BETTER HEALTH**

We're collaborating with the Greater Manchester Health and Social Care Partnership, NHS trusts and Health Innovation Manchester to tackle local and global health challenges through research, teaching and social responsibility initiatives.



**GLOBAL PARTNERSHIPS**

We're part of more than 50 healthcare partnerships in the Global South in support of UN SDGs.



**EMERGENCY RESPONSE REGISTER**

We created the UK International Emergency Trauma Register and deploy medical experts during overseas disasters.



**HEALTH INNOVATION MANCHESTER**

Our unique civic and academic collaboration to transform the health and wellbeing of Greater Manchester's 2.8 million citizens.



**HUMANITARIAN AND CONFLICT RESPONSE**

We partner with the WHO, Médecins Sans Frontières and the British Red Cross in our humanitarian and conflict response work.

**ENVIRONMENTAL SUSTAINABILITY**

We're leading the way to a more sustainable world through research, teaching, operations and engagement activities in areas such as climate change, population growth, rapid urbanisation, overconsumption, food and water security, loss of biodiversity and pollution.



**DECARBONISATION**

Our science has helped to create a pathway for Greater Manchester to reach zero carbon status by 2038.



**RENEWABLE ENERGY**

We lead the biggest research project into sustainable development of the world's dams.



**PLASTIC POLLUTION**

We've eliminated more than 250,000 pieces of avoidable single-use plastic, with more to come.



**GREEN CAMPUS**

We've planted more than 300 trees on campus and launched an interactive tree trail.

**CULTURAL ENGAGEMENT**

Our unique cultural institutions – the Whitworth, the John Rylands Research Institute and Library, Manchester Museum and Jodrell Bank Discovery Centre – are engaging audiences through their diverse collections, events, exhibitions, partnerships and inspirational spaces.



**ENGAGING THE PUBLIC**

Our bluedot festival brings together music, science and culture at Jodrell Bank Observatory, a UNESCO world heritage site.



**GREATER INCLUSIVITY**

We're investing in our Manchester Museum to create a more inclusive, caring and imaginative destination for all our visitors.



**CARBON LITERATE MUSEUM**

Ours was the world's first museum to receive a Carbon Literate Organisation Award for cultivating a low carbon culture.



**CULTURAL PARK KEEPER**

Our Whitworth gallery employs the UK's first Cultural Park Keeper, responsible for outdoor activities focused on wellbeing.

# Purpose, Processes, People

## PURPOSE

- **Institutional strategy:** embedding SR at all levels
- **Sustainable Development Goals:** addressing what the world wants and expects from universities
- **Civic Engagement:** addressing what our city-region wants and expects from us
- **Public engagement:** ensuring we support a culture of high-quality public engagement

## PROCESSES

- Recognising and rewarding contributions to SR; focused programmes; evaluating what we do; joined-up thinking; communicating; learning; holding a mirror up to ourselves e.g. what we pay staff, where we invest money

## PEOPLE

- Involving and engaging staff, students, alumni and external partners



# Performance

## Measure 1:

To perform in the top 2% of universities globally in the THE Impact Ranking for performance in meeting the UN Sustainable Development Goals (SDGs)

## Measure 2:

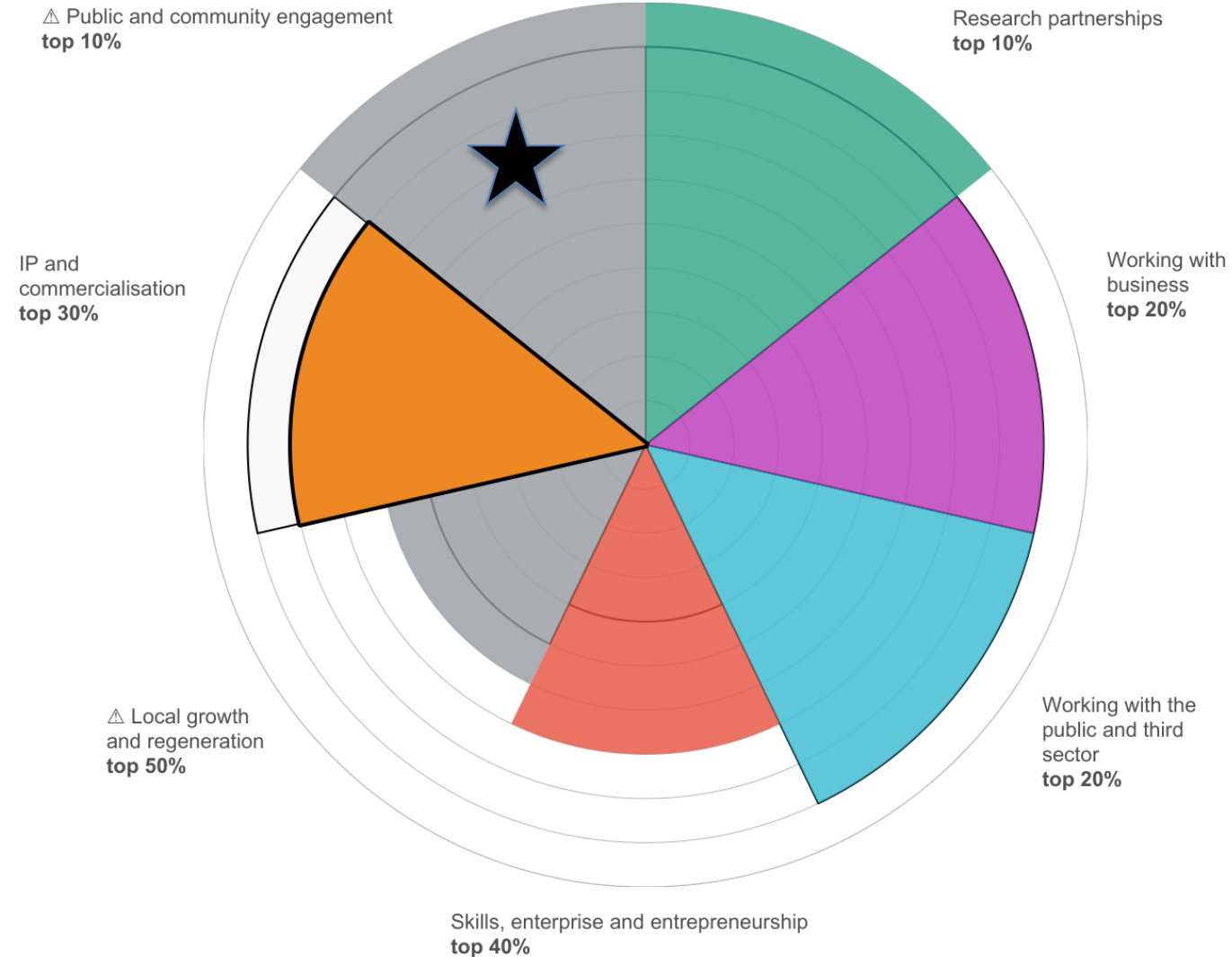
To perform in the highest top decile in the UKRI/Research England's Knowledge Exchange Framework segment for Public and Community Engagement



# Measure 1: THE Impact

Rank	2019 (450 entrants, 76 countries)	2020 (768 entrants, 85 countries)	2021 (1,240 entrants, 98 countries)
1	Uni of Auckland, NZ	Uni of Auckland, NZ	<b>UNI OF MANCHESTER, UK</b>
2	McMaster Uni, Canada	Uni of Sydney, Australia	Uni of Sydney, Australia
3	<b>UNI OF MANCHESTER, UK</b>	Western Uni Sydney, Australia	RMIT, Australia
4	UBC, Canada	La Trobe Uni, Australia	La Trobe Uni, Australia
5	King's College, UK	Arizona State Uni, US	Queen's Uni, Canada
6	Uni of Gothenburg, Sweden	Uni of Bologna, Italy	Uni of Wollongong, Australia
7	KTH Royal Inst Tech, Sweden	UBC, Canada	Aalborg, Denmark
8	Uni of Montreal, Canada	<b>UNI OF MANCHESTER, UK</b>	Uni College Cork, Ireland
9	Uni of Bologna, Italy	King's College, UK	Arizona State Uni, US
10	Uni of Hong Kong, Hong Kong	RMIT, Australia	Uni of Auckland, NZ

# Measure 2: KEF public engagement



# Seven lessons from embedding social responsibility

1. The power of **strategy**
2. Importance of **Academic leadership**
3. Importance of **Professional leadership**
4. Taking an '**outside in**' approach
5. Holding up a **mirror to ourselves**
6. The **power in our place**
7. The power of **partnership**



***‘Not about what are we good at but  
what are we good for’***





# Get in touch

[julian.skyrme@manchester.ac.uk](mailto:julian.skyrme@manchester.ac.uk)

Director of Social Responsibility

[nalin.thakker@manchester.ac.uk](mailto:nalin.thakker@manchester.ac.uk)

Vice-President for Social Responsibility

[www.socialresponsibility.manchester.ac.uk](http://www.socialresponsibility.manchester.ac.uk)